



Australian Government

Australia's COVID-19  
Vaccine Roadmap

# Priority groups for COVID-19 Vaccination Program: Phase 1B

BE COVIDSAFE

**COVID-19**  
 **VACCINATION**  
Safe. Effective. Free.

# COVID-19 vaccine national roll-out strategy

## Phase 1a – up to 1.4m doses

Commenced 22 February 2021

Quarantine and border workers	70,000
Frontline health care worker sub-groups for prioritisation	100,000
Aged care and disability care staff	318,000
Aged care and disability care residents	190,000
<b>Total</b>	<b>678,000</b>

## Phase 1b – up to 14.8m doses

Elderly adults aged 80 years and over	1,045,000
Elderly adults aged 70-79 years	1,858,000
Other health care workers	953,000
Aboriginal and Torres Strait Islander people > 55	87,000
Younger adults with an underlying medical condition, including those with a disability	2,000,000
Critical and high risk workers including defence, police, fire, emergency services and meat processing	196,000
<b>Total</b>	<b>6,139,000</b>

## Phase 2a – up to 15.8m doses

Adults aged 60-69 years	2,650,000
Adults aged 50-59 years	3,080,000
Aboriginal and Torres Strait Islander people 18- 54	387,000
Other critical and high risk workers	453,000
<b>Total</b>	<b>6,570,000</b>

## Phase 2b – up to 16m doses

Balance of adult population	<b>6,643,000</b>
<i>Catch up any unvaccinated Australians from previous phases</i>	

## Phase 3 – up to 13.6m doses

< 18 if recommended*	5,670,000
----------------------	-----------

Population numbers are current estimates for each category.  
\* 16 and 17 year olds will be able to access the Pfizer vaccine in line with the relevant cohort.

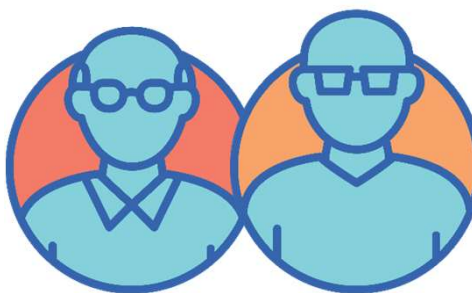
# Who will be vaccinated under Phase 1b, based on recommendations by the Australian Technical Advisory Group on Immunisation



Healthcare workers  
currently employed  
and not included in  
Phase 1a



Critical and high risk  
workers currently  
employed



People over 80 years  
People over 70 years



Aboriginal and Torres  
Strait Islander people  
over 55 years



People over 18 with  
an underlying  
medical condition,  
including disability



## Phase 1b: Healthcare Workers

### Who

- Individuals employed in the medical profession, including allied health professionals, aged care and disability workers
- All public and private hospital staff
- Healthcare workers in private practice
- Community pharmacy staff
- Healthcare workers providing in-home and community care, including centre-based care
- Workforce supporting medical practitioners in a clinical setting, including students on placement
- Onsite administrative staff in healthcare settings
- Cleaners, kitchen staff and other ancillary staff in healthcare settings

### Where

Phase 1b sites  
by appointment

Pfizer hubs if  
contacted by  
jurisdiction

### Requirements

Proof of occupation (ID card, letter from employer or *Phase 1B Declaration Form*) will be required to demonstrate eligibility



## Phase 1b: Carers and disability settings

Included	Excluded	Where	Requirements
Essential carers (paid and unpaid) including carers who are also family members of someone with disability or an elderly person.	Family members of people with disability who are not carers.	Phase 1b sites by appointment or by other arrangement.	Carers documentation or proof of occupation (ID card or letter from employer/centre-based support provider).
Disability support volunteers who provide support to people in their homes, respite care, educational, employment and leisure settings.			
People with a disability attending centre-based services (e.g. day programs, supported employment).			Where none of these are available, individuals may complete a <i>Phase 1B Declaration Form</i>



## Phase 1b: Critical and High Risk Workers

### Who

- Emergency services personnel, including frontline police officers, fire and rescue personnel, corrective services officers
- Rural Fire Service and State Emergency Service volunteers
- Active Australian Defence Force personnel
- Australian Government officials about to be deployed or currently deployed overseas on official government business
- Workers involved in manufacture of AstraZeneca vaccine and distribution/delivery of COVID-19 vaccines
- Workers at licensed meat processing businesses

### Where

Phase 1b sites  
by appointment

Defence to  
provide for  
ADF

### Requirements

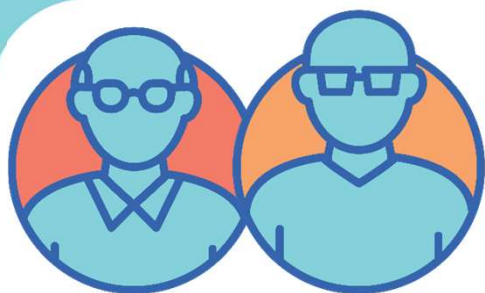
Proof of occupation (ID card, letter from employer or *Phase 1B Declaration Form*) will be required to demonstrate eligibility



## Phase 1b: Licensed meat processing workers

- Workers directly involved in the manufacturing and distribution process, where the work is in a cold environment and workers are unable to maintain physical distancing requirements

Included	Excluded
Abattoir workers, including attending veterinarians	Retail workers including butcher shops, fishmongers
Workers in boning rooms	Primary production workers, including fishing
Smallgoods manufacturers	Clerical workers
Cold chain transport workforce	
Seafood processing	



## Phase 1b: Elderly people

### Who

- People over 80 years

### Where

Phase 1b sites by appointment

- People over 70 years

### Requirements

All standard forms of identification (drivers licence, passport) will be accepted

For individuals attending their usual GP, the clinic's records may be relied upon as evidence.

Other forms of accepted evidence include:

- My Health Record
- Government issued documents with date of birth (e.g. Centrelink, Medicare, Department of Veterans Affairs)





## Phase 1b: Aboriginal and Torres Strait Islander People

### Who

- Aboriginal and Torres Strait Islander people aged over 55
- Aboriginal and Torres Strait Islander people aged under 55 who meet other phase 1b criteria, i.e. underlying medical condition, health care worker, critical or high risk worker

### Where

Phase 1b sites by  
appointment

### Requirements

As for general population for age eligibility

Self-identification as an Aboriginal and/or Torres Strait Islander at the time of vaccination, which may be verbal

As for the criteria for the relevant priority cohort



# Phase 1b: Underlying medical conditions

Australia's COVID-19  
Vaccine Roadmap

Conditions	Notes
<b>Immunocompromising conditions</b>	
Solid organ transplant recipients who are on immune suppressive therapy	
Adult survivors of childhood cancers	
Bone marrow transplant recipients or those on chimeric antigen receptor T-cell (CAR-T) therapy or those on immune suppressive therapy for graft versus host disease	
Haematological diseases or cancers <b>including</b> leukaemia, lymphoma or myeloma	Diagnosed within the past 5 years or on recently completed active treatment including chemotherapy, radiotherapy, immunotherapy or targeted anti-cancer therapy or with advanced disease regardless of treatment
Non-haematological cancer	Diagnosed within the past 5 years or on recently completed active treatment including chemotherapy, radiotherapy, immunotherapy or targeted anti-cancer therapy or with advanced disease regardless of treatment
Chronic inflammatory conditions on medical treatments	<b>Including:</b> Systemic Lupus Erythematosus, Rheumatoid Arthritis, Crohn's disease, ulcerative colitis, and similar who are being treated with Disease modifying anti-rheumatic drugs (DMARDs) or immune-suppressive or immunomodulatory therapies. <b>Generally not inclusive</b> of people living with osteoarthritis, fibromyalgia, myalgic encephalomyelitis/chronic fatigue syndrome or similar non-immunocompromising inflammatory conditions.
Primary or acquired immunodeficiency	<b>Including</b> congenital causes of immunodeficiency and HIV/AIDS
Those with severe mental health conditions	<b>Including</b> schizophrenia, bi-polar disorder



# Phase 1b: Underlying medical conditions

Conditions	Notes
<b>Other underlying conditions</b>	
Chronic renal (kidney) failure with a eGFR of <44mL/min	<b>Does not include</b> mild-moderate chronic kidney disease
Heart disease	<b>Including</b> Ischaemic heart disease, valvular heart disease, cardiomyopathies and pulmonary hypertension
Chronic lung disease	<b>Including</b> Chronic Obstructive Pulmonary Disease, cystic fibrosis, interstitial lung disease. <b>Does not include</b> Mild or moderate asthma
Diabetes	
Severe obesity with a BMI $\geq 40\text{kg/m}^2$	
Chronic liver disease	
Some neurological conditions	<b>Including</b> Stroke, dementia, Multiple sclerosis, motor neurone disease, Parkinson's disease, cerebral palsy. Generally not inclusive of migraine or cluster headaches
Poorly controlled blood pressure (defined as two or more pharmacologic agents for blood pressure control, regardless of recent readings)	
Those with Down syndrome, muscular dystrophy, traumatic brain and spinal cord injury	



## Phase 1b: Proof of eligibility – underlying medical conditions

- For individuals attending their usual GP, the clinic's records may be relied upon as evidence
- MyHealth Record
- A referral from GP or treating specialist
- Alternative medical records, including:
  - a printout of your medical history as recorded in your clinical records;
  - a printout of your chronic disease care plan; a discharge summary from a hospital or other medical facility; or
  - a valid script or medication prescribed to treat one or more of the relevant medical conditions
- Where none of these are available, individuals may complete a *Phase 1B Declaration Form*

# Proof of eligibility – Obligations for immunisers



- Confirm that proof of eligibility meets one of the accepted types
- Make a record of the form of proof provided
- Eligibility only needs to be assessed for the first dose
  - If an individual has one dose recorded in AIR and required spacing between doses is met, there is no need to again check priority eligibility
- No further assessment of is required by providers to assess whether an individual falls in a priority cohort
- The reason for eligibility does not need to be reported

## Where will I be vaccinated?

Most individuals in Phase 1B will make an appointment through the National Booking Service or provider's own booking system and attend the clinic to be vaccinated

GPRCs, state vaccination clinics, Aboriginal Community Controlled Health Services and some GPs will commence providing COVID-19 vaccines from Phase 1B

ADF personnel will be vaccinated by Defence

States and Territories will manage vaccination of their healthcare workforce and emergency services personnel

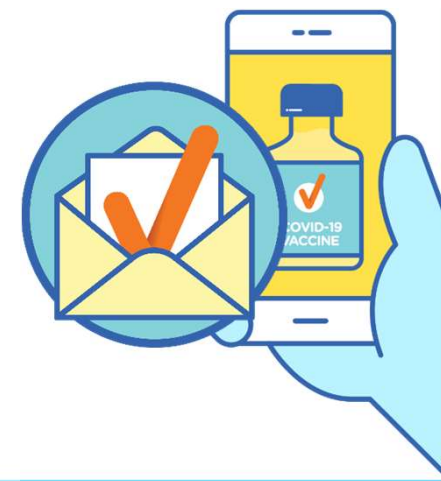


## How can I prove I've been vaccinated?

Australians can already access their immunisation history statement through Medicare for proof of vaccination, both digitally and in hard copy, if required.

Statements can be viewed on an individual's Medicare online account or via the Medicare app.

Your immunisation history statement will record your COVID-19 vaccinations, following each dose.



For more information on TGA's COVID-19 vaccine approval process visit: [www.tga.gov.au/covid-19-vaccine-approval-process](https://www.tga.gov.au/covid-19-vaccine-approval-process)

For the latest COVID-19 vaccine updates visit: [www.health.gov.au/covid19-vaccines](https://www.health.gov.au/covid19-vaccines)

For the latest official coronavirus news, updates and advice from the Australian Government visit: [www.australia.gov.au](https://www.australia.gov.au)

