

South Burnett Coal Project
Proposed Rail Corridor

- Legend
- Towns

Airports

Railway/light railway

Alignment

Affected lots

ML Permit Application

Roads

Land ownership

Queensland Rail

State Government

Private Owned
- DRAFT
- Page 1 of 14
- An inset map shows the broader geographical context of the project. It highlights the South Burnett region in a blue box, with Gympie and Somerset regions also labeled. A red line indicates the proposed rail corridor's path through the South Burnett area.
- 0 0.5 1 2 3

Kilometres

Map Size: A3

Coordinate System: GCS GDA 1994

Datum: GDA 1994

Units: Degree
- Map produced by the Department of State Development
Spatial Services Unit, 14/06/2017
- The logo of the Queensland Government, featuring the state coat of arms and the text 'Queensland Government'.
- © Copyright the State of Queensland (Department of State Development) 2017. No liability accepted for any loss or damage which may arise from the use or reliance upon this information
- RTIP1718-021-DSDMIP Page 96
- Path: S:\Projects\CPD\20160830_SouthBurnettCoal\MXD\170613_SouthBurnettCoal_ProposedRail_LandOwnership_A3L.mxd

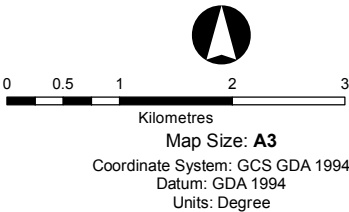
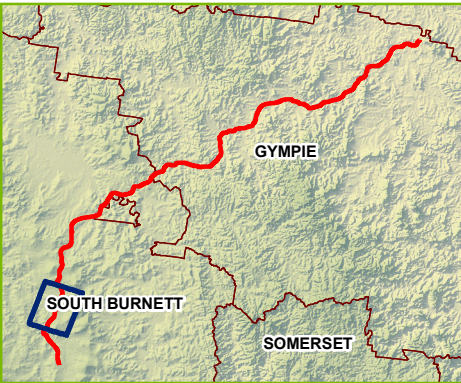
South Burnett Coal Project
Proposed Rail Corridor

Legend

DRAFT

- Towns
- Airports
- Railway/light railway
- Alignment
- Affected lots
- ML Permit Application
- Roads
- Land ownership**
 - Queensland Rail
 - State Government
 - Private Owned

Page 2 of 14



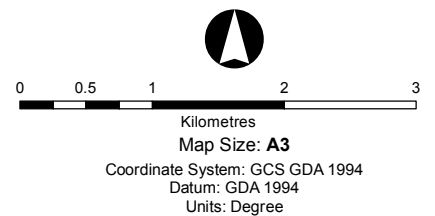
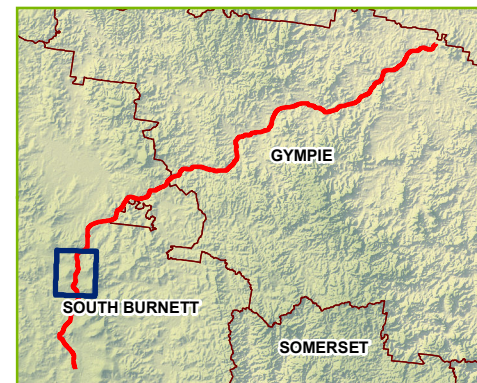
Map produced by the Department of State Development
Spatial Services Unit, 14/06/2017



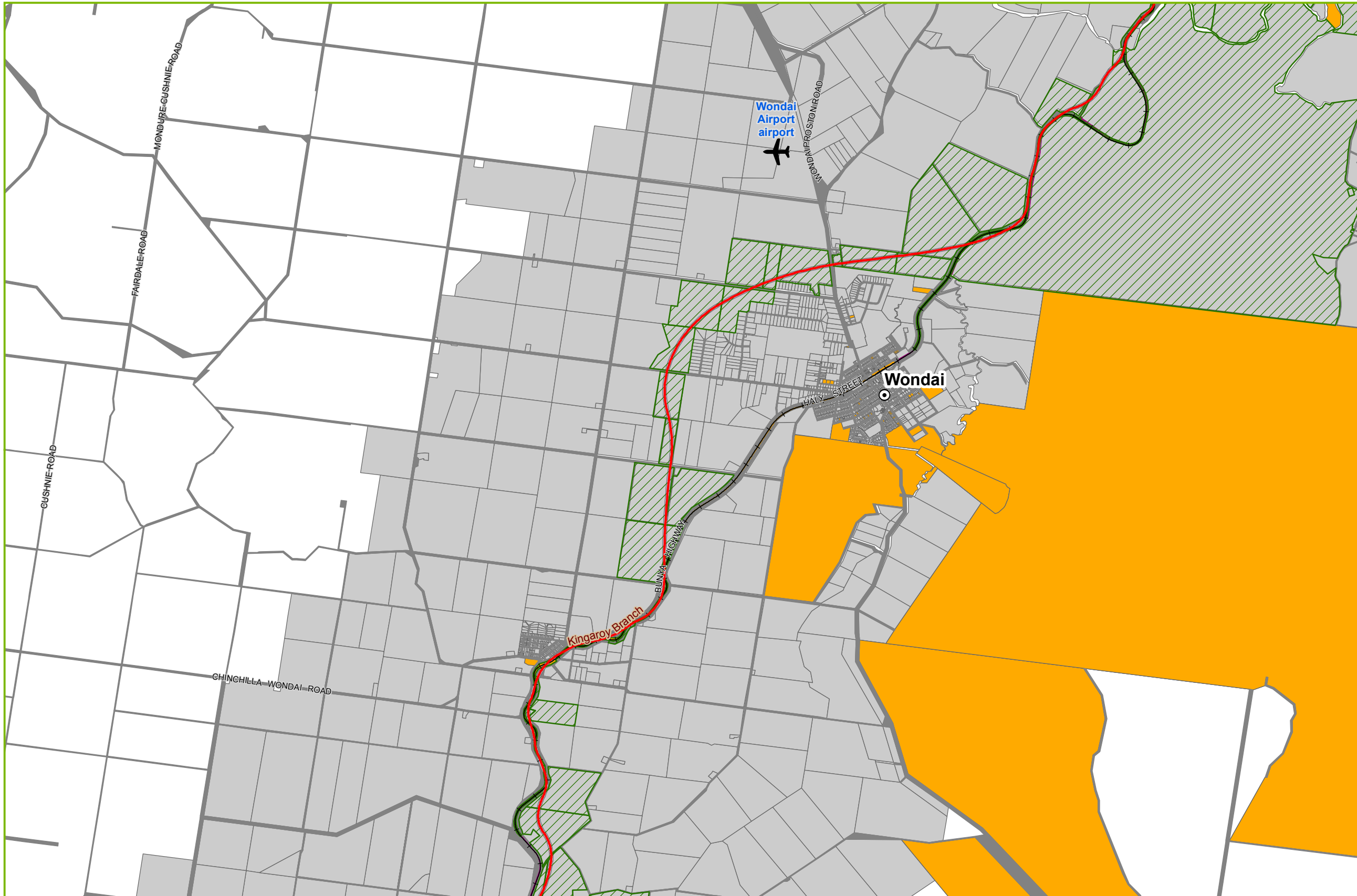
**South Burnett Coal Project
Proposed Rail Corridor****Legend****DRAFT**

- ⊙ Towns
- ✈ Airports
- +— Railway/light railway
- Alignment
- ▨ Affected lots
- ML Permit Application
- Roads
- Land ownership**
- Queensland Rail
- State Government
- Private Owned

Page 3 of 14



Map produced by the Department of State Development
Spatial Services Unit, 14/06/2017



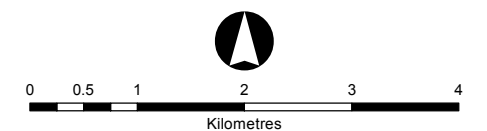
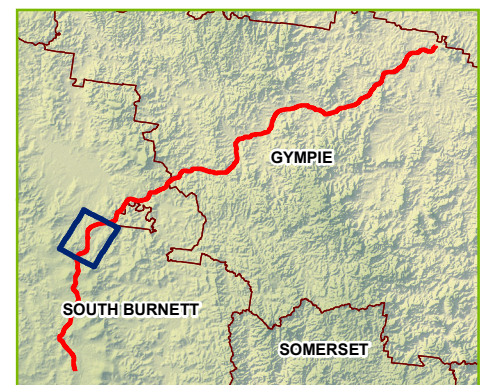
South Burnett Coal Project Proposed Rail Corridor

Legend

DRAFT

- Towns
- ✈ Airports
- Railway/light railway
- Alignment
- ▨ Affected lots
- ▨ ML Permit Application
- Roads
- Land ownership**
- ▨ Queensland Rail
- ▨ State Government
- ▨ Private Owned

Page 4 of 14



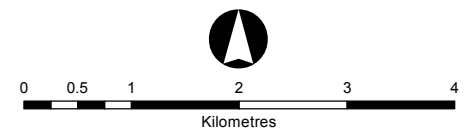
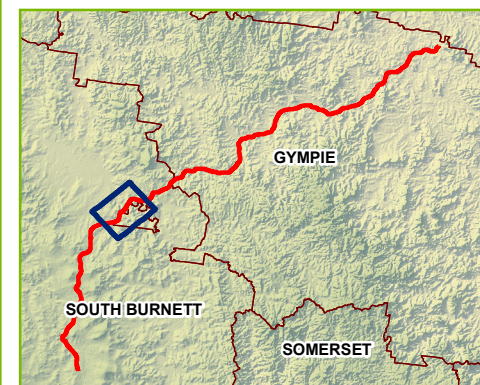
Map Size: **A3**
Coordinate System: GCS GDA 1994
Datum: GDA 1994
Units: Degree

Map produced by the Department of State Development
Spatial Services Unit, 14/06/2017

**South Burnett Coal Project
Proposed Rail Corridor****Legend****DRAFT**

- Towns
- ✈ Airports
- Railway/light railway
- Alignment
- ▨ Affected lots
- ML Permit Application
- Roads
- Land ownership**
- Queensland Rail
- State Government
- Private Owned

Page 5 of 14



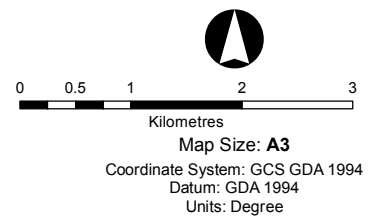
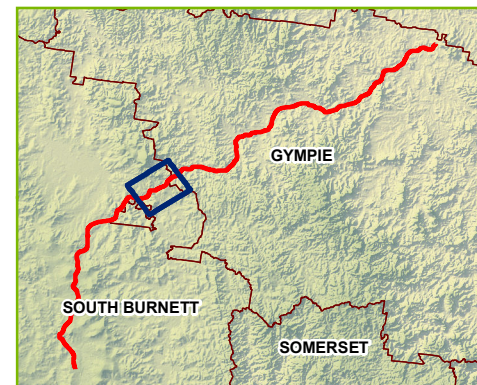
Map Size: **A3**
Coordinate System: GCS GDA 1994
Datum: GDA 1994
Units: Degree

Map produced by the Department of State Development
Spatial Services Unit, 14/06/2017

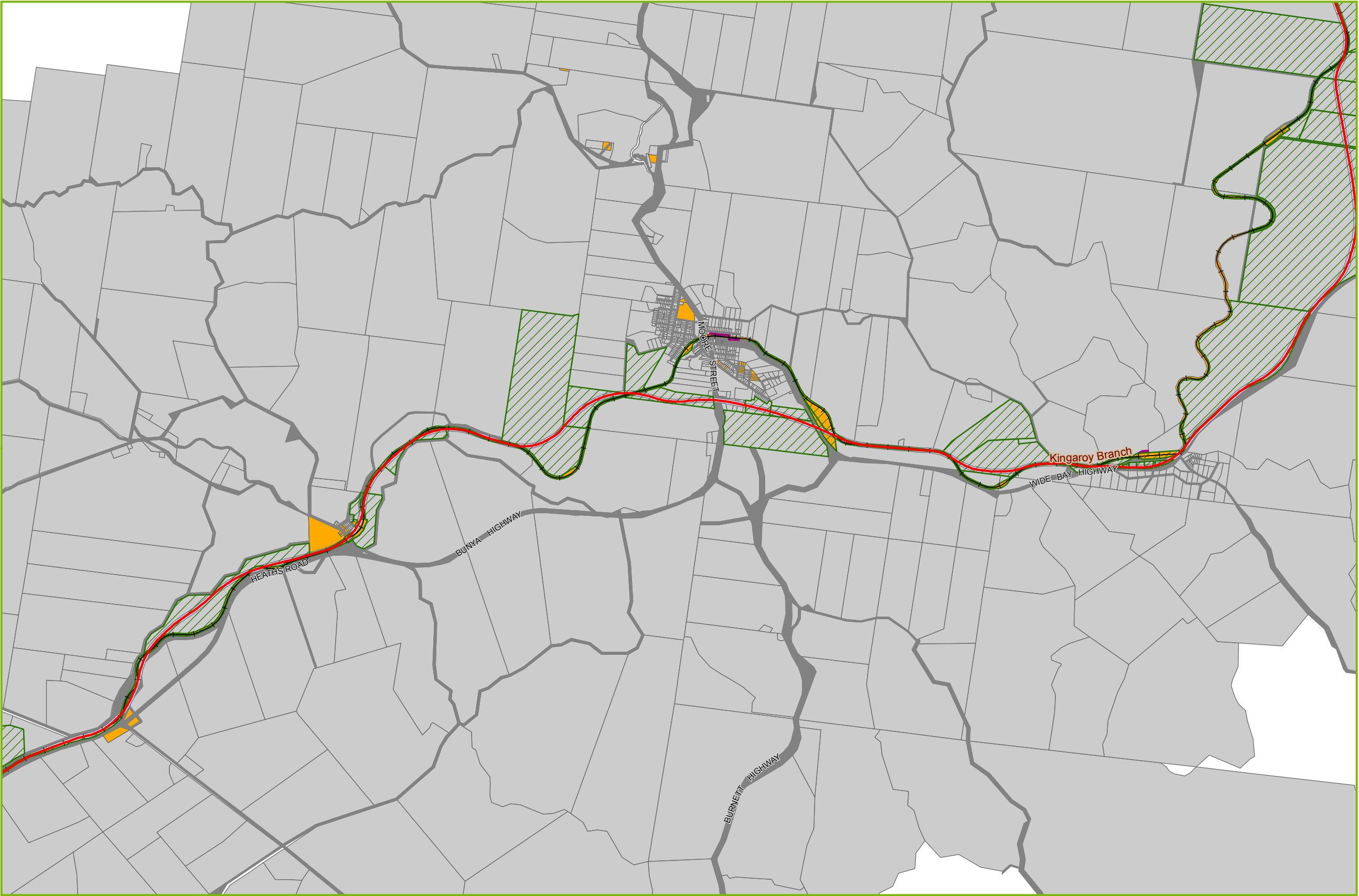
**South Burnett Coal Project
Proposed Rail Corridor****Legend****DRAFT**

- Towns
- ✈ Airports
- Railway/light railway
- Alignment
- ▨ Affected lots
- ML Permit Application
- Roads
- Land ownership**
- Queensland Rail
- State Government
- Private Owned

Page 6 of 14



Map produced by the Department of State Development
Spatial Services Unit, 14/06/2017

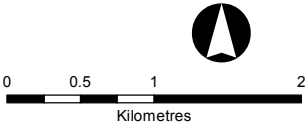
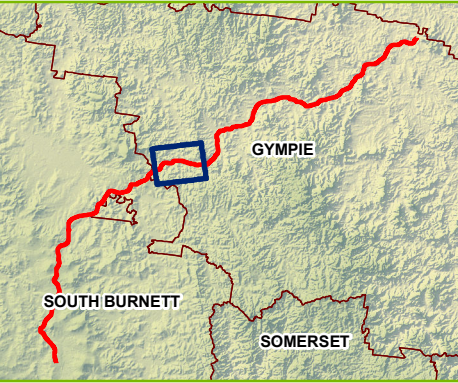


South Burnett Coal Project
Proposed Rail Corridor

Legend

DRAFT

- Towns
- Airports
- Railway/light railway
- Alignment
- Affected lots
- ML Permit Application
- Roads
- Land ownership
 - Queensland Rail
 - State Government
 - Private Owned



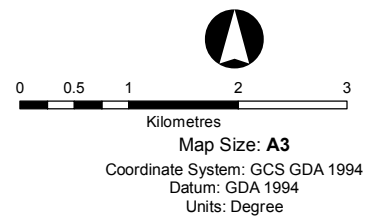
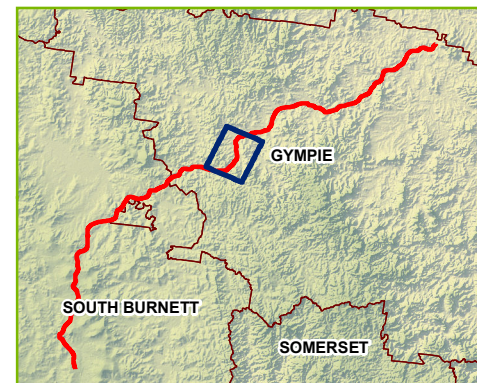
Map Size: A3
Coordinate System: GCS GDA 1994
Datum: GDA 1994
Units: Degree
Map produced by the Department of State Development
Spatial Services Unit, 14/06/2017



**South Burnett Coal Project
Proposed Rail Corridor****Legend****DRAFT**

- Towns
- ✈ Airports
- Railway/light railway
- Alignment
- ▨ Affected lots
- ML Permit Application
- Roads
- Land ownership**
- Queensland Rail
- State Government
- Private Owned

Page 8 of 14



Map produced by the Department of State Development
Spatial Services Unit, 14/06/2017

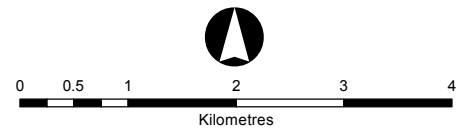
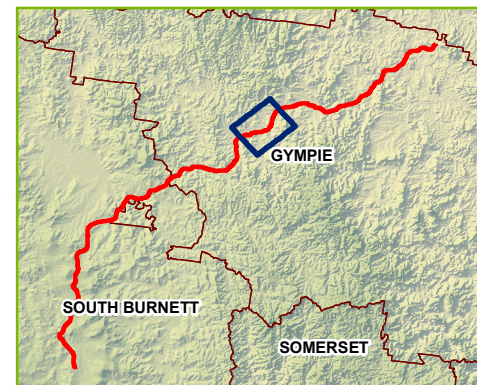
South Burnett Coal Project Proposed Rail Corridor

Legend

DRAFT

- ⊙ Towns
- ✈ Airports
- Railway/light railway
- Alignment
- ▨ Affected lots
- ML Permit Application
- Roads
- Land ownership**
 - Queensland Rail
 - State Government
 - Private Owned

Page 9 of 14



Map Size: **A3**
 Coordinate System: GCS GDA 1994
 Datum: GDA 1994
 Units: Degree

Map produced by the Department of State Development
 Spatial Services Unit, 14/06/2017

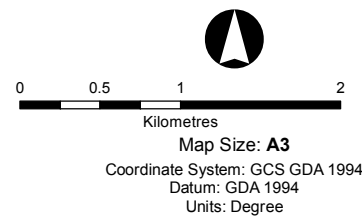
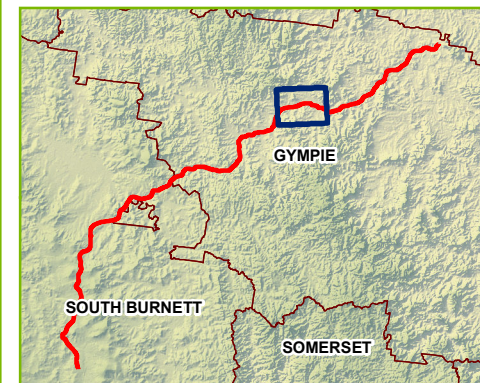
South Burnett Coal Project Proposed Rail Corridor

Legend

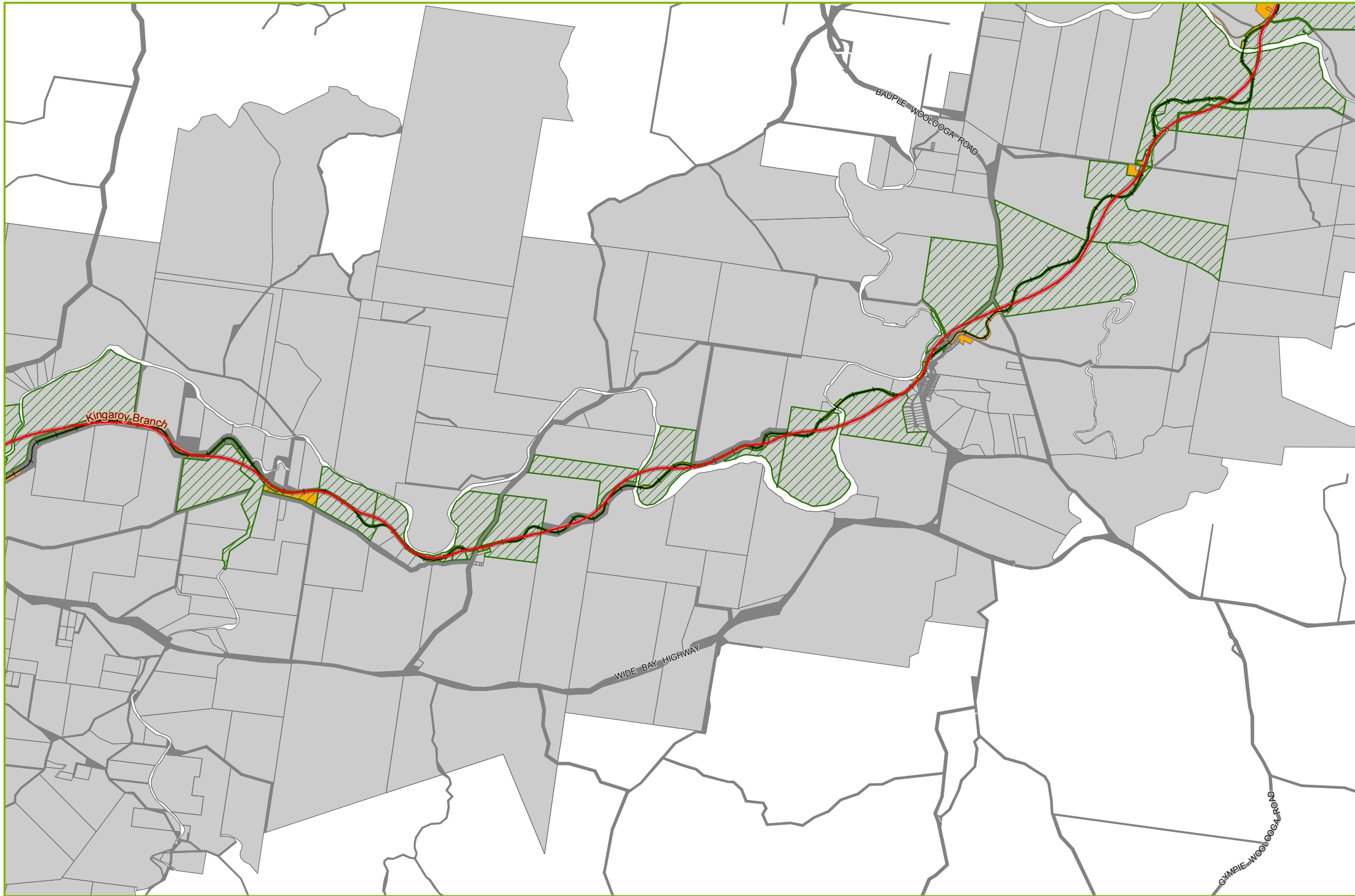
DRAFT

- ⊙ Towns
- ✈ Airports
- +— Railway/light railway
- Alignment
- ▨ Affected lots
- ML Permit Application
- Roads
- Land ownership**
- Queensland Rail
- State Government
- Private Owned

Page 10 of 14



Map produced by the Department of State Development
Spatial Services Unit, 14/06/2017



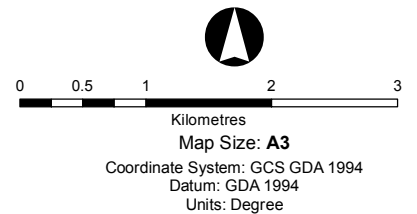
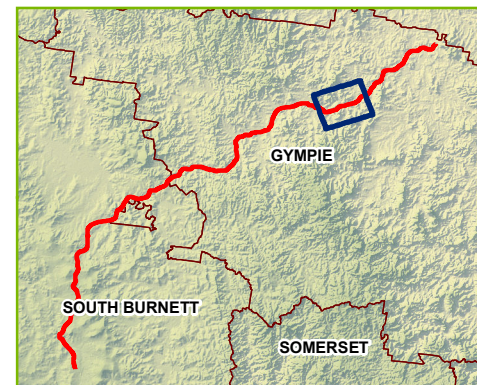
South Burnett Coal Project Proposed Rail Corridor

Legend

DRAFT

- ⦿ Towns
- ✈ Airports
- Railway/light railway
- Alignment
- ▨ Affected lots
- ML Permit Application
- Roads
- Land ownership**
 - Queensland Rail
 - State Government
 - Private Owned

Page 11 of 14



Map produced by the Department of State Development
Spatial Services Unit, 14/06/2017

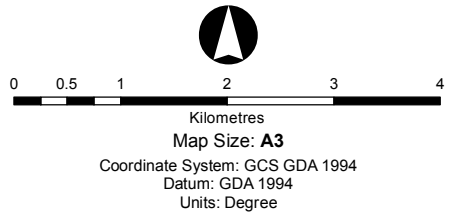
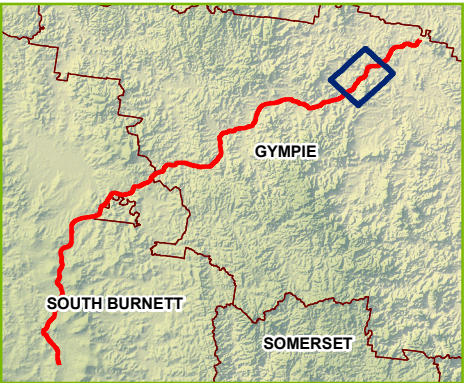
South Burnett Coal Project
Proposed Rail Corridor

Legend

DRAFT

- ⦿ Towns
- ✈ Airports
- Railway/light railway
- Alignment
- ▨ Affected lots
- ▨ ML Permit Application
- ▨ Roads
- Land ownership**
 - ▨ Queensland Rail
 - ▨ State Government
 - ▨ Private Owned

Page 12 of 14



Map produced by the Department of State Development
Spatial Services Unit, 14/06/2017





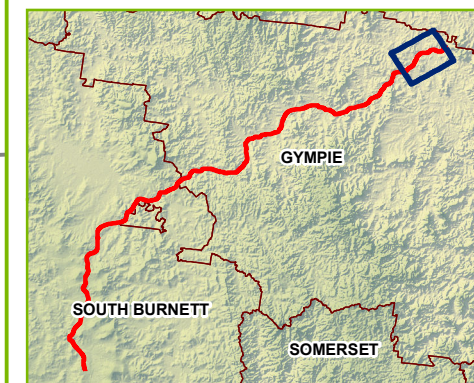
South Burnett Coal Project Proposed Rail Corridor

Legend

DRAFT

- Towns
- ✈ Airports
- Railway/light railway
- Alignment
- ▨ Affected lots
- ML Permit Application
- Roads
- Land ownership**
 - Queensland Rail
 - State Government
 - Private Owned

Page 13 of 14

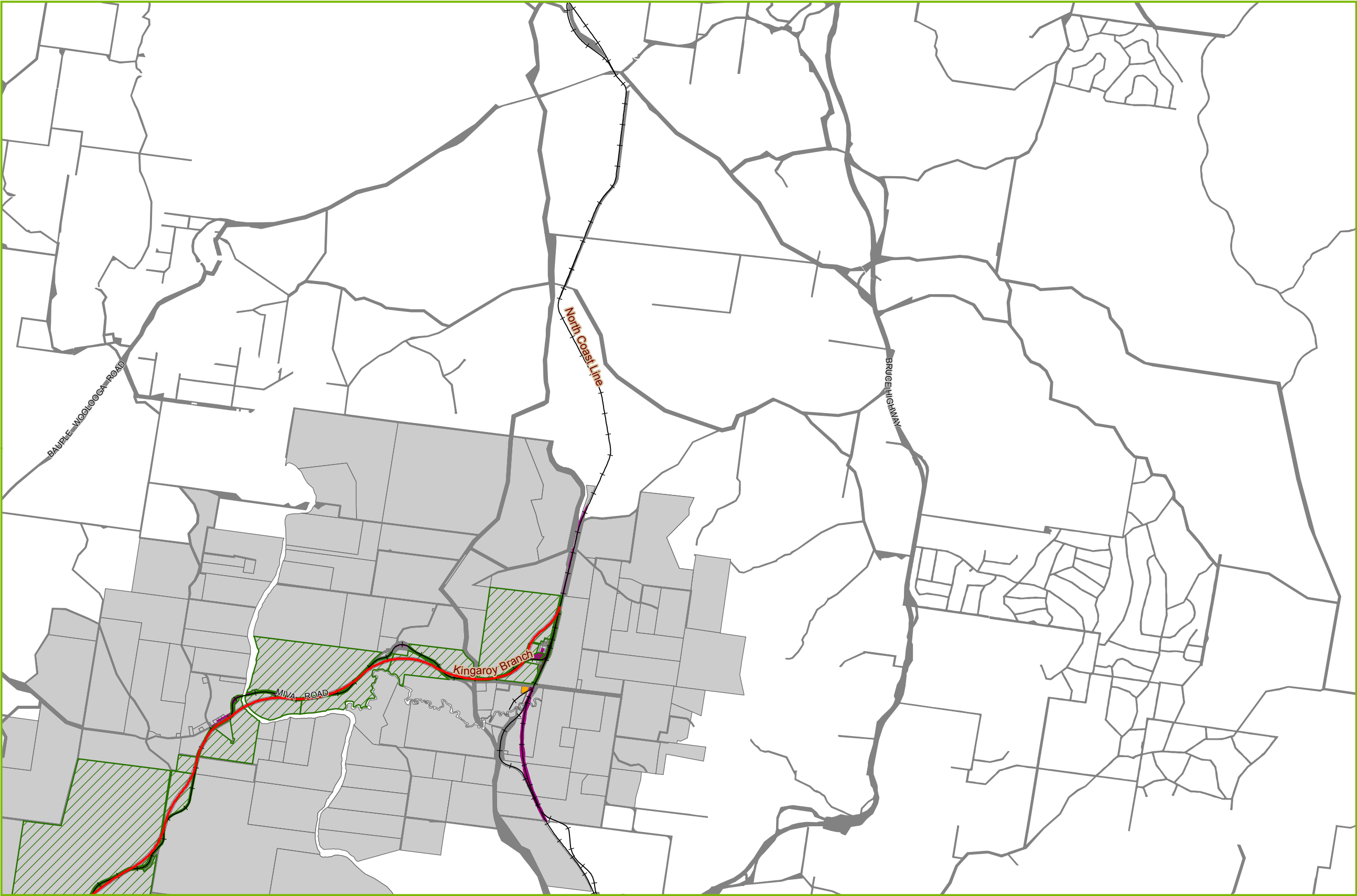


0 0.5 1 2 3
Kilometres

Map Size: A3

Coordinate System: GCS GDA 1994
Datum: GDA 1994
Units: Degree

Map produced by the Department of State Development
Spatial Services Unit, 14/06/2017



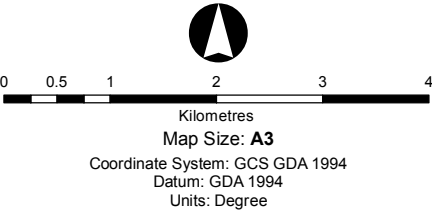
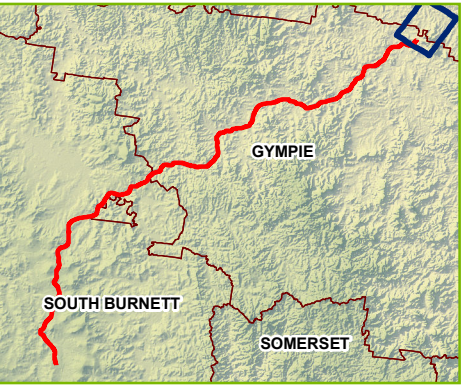
South Burnett Coal Project
Proposed Rail Corridor

Legend

DRAFT

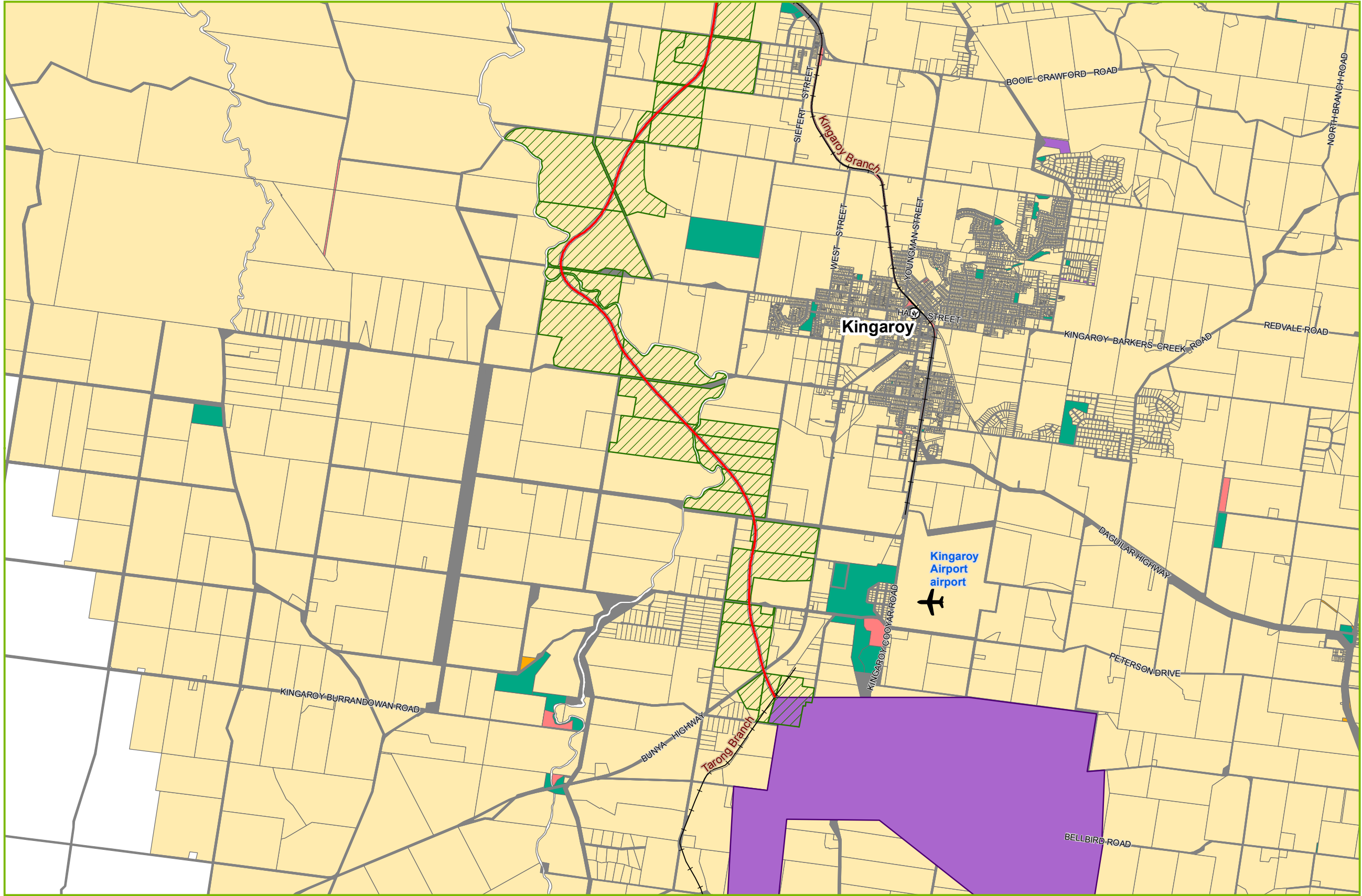
- Towns
- Airports
- Railway/light railway
- Alignment
- Affected lots
- ML Permit Application
- Roads
- Land ownership**
 - Queensland Rail
 - State Government
 - Private Owned

Page 14 of 14



Map produced by the Department of State Development
Spatial Services Unit, 14/06/2017





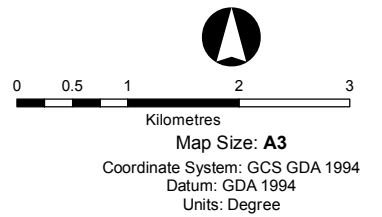
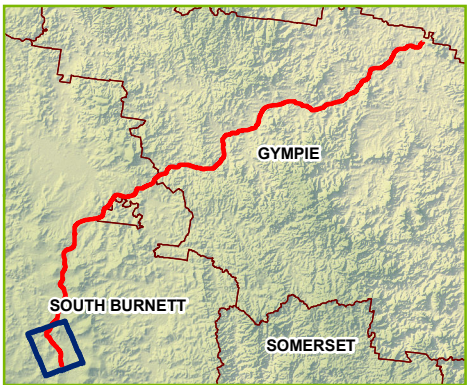
South Burnett Coal Project Proposed Rail Corridor

Legend

DRAFT

- Towns
- Airports
- Railway/light railway
- Alignment
- Affected lots
- ML Permit Application
- Roads
- Land tenure**
 - Covenant
 - Freehold
 - Housing Land
 - Lands Lease
 - National Park
 - Railway
 - Reserve
 - State Forest
 - State Land

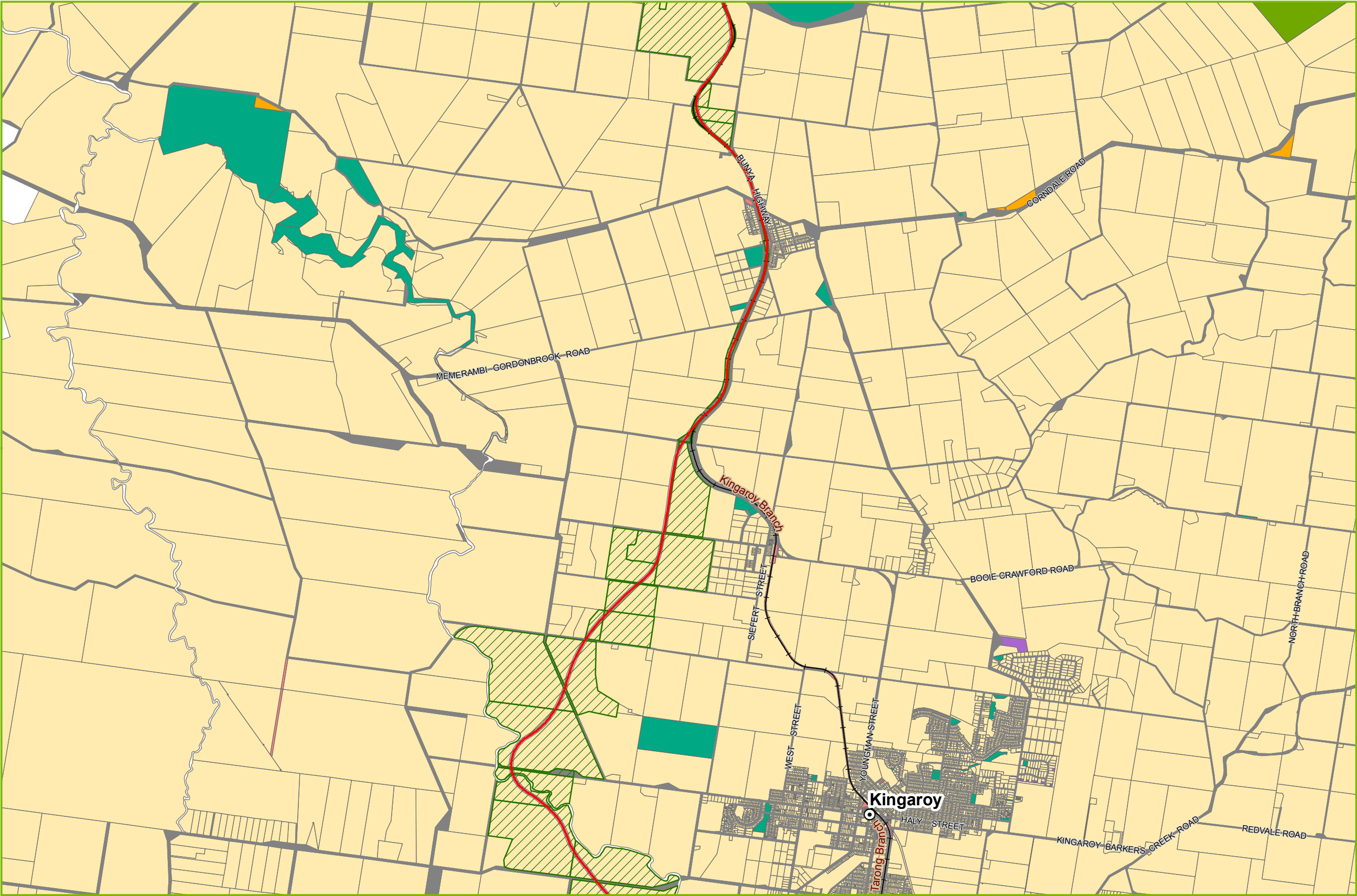
Page 1 of 14



Map Size: A3
Coordinate System: GCS GDA 1994
Datum: GDA 1994
Units: Degree

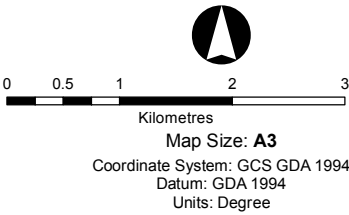
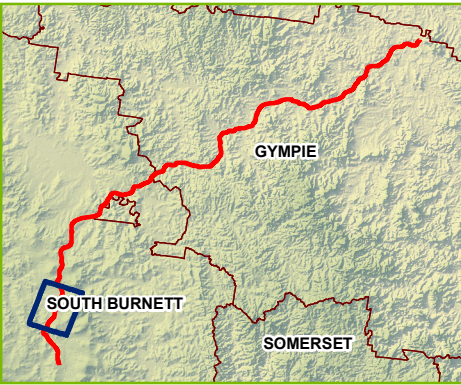
Map produced by the Department of State Development
Spatial Services Unit, 14/06/2017





South Burnett Coal Project
Proposed Rail Corridor

- Legend** DRAFT
- Towns
 - Airports
 - Railway/light railway
 - Alignment
 - Affected lots
 - ML Permit Application
 - Roads
 - Land tenure**
 - Covenant
 - Freehold
 - Housing Land
 - Lands Lease
 - National Park
 - Railway
 - Reserve
 - State Forest
 - State Land



Map Size: **A3**
Coordinate System: GCS GDA 1994
Datum: GDA 1994
Units: Degree
Map produced by the Department of State Development
Spatial Services Unit, 14/06/2017





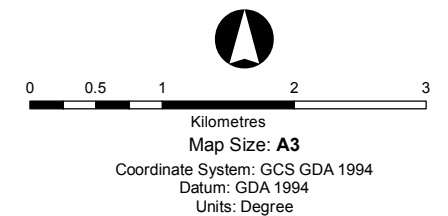
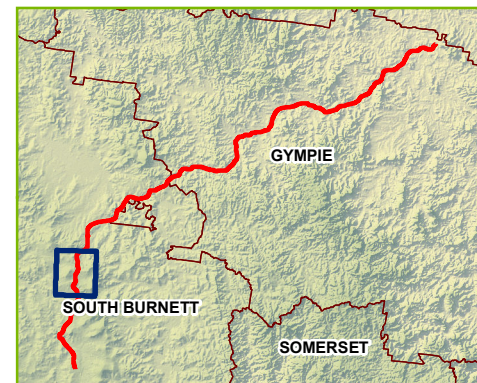
South Burnett Coal Project Proposed Rail Corridor

Legend

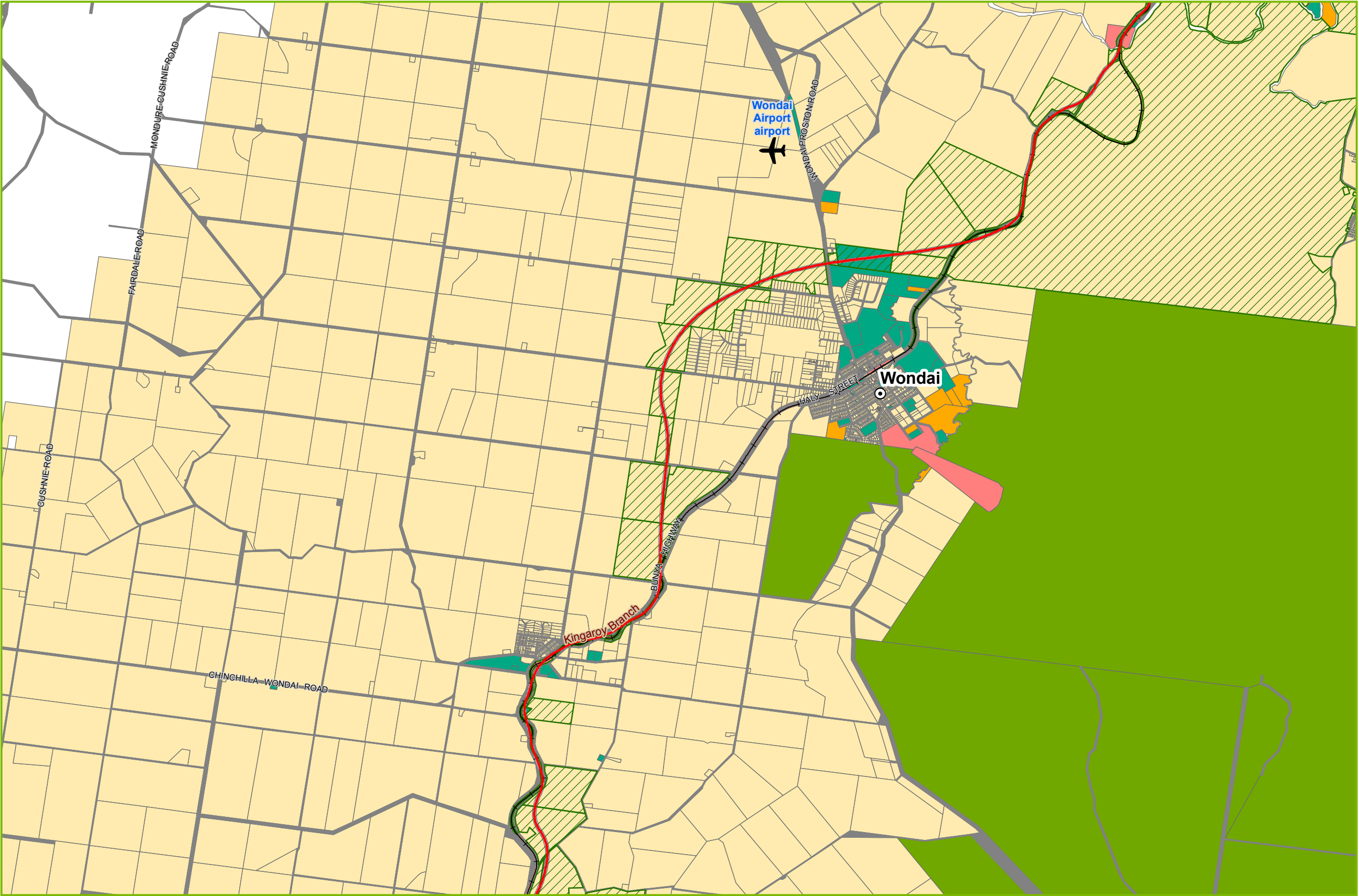
DRAFT

- ⊙ Towns
- ✈ Airports
- Railway/light railway
- Alignment
- ▨ Affected lots
- ▨ ML Permit Application
- ▨ Roads
- Land tenure**
 - ▨ Covenant
 - ▨ Freehold
 - ▨ Housing Land
 - ▨ Lands Lease
 - ▨ National Park
 - ▨ Railway
 - ▨ Reserve
 - ▨ State Forest
 - ▨ State Land

Page 3 of 14



Map produced by the Department of State Development
Spatial Services Unit, 14/06/2017



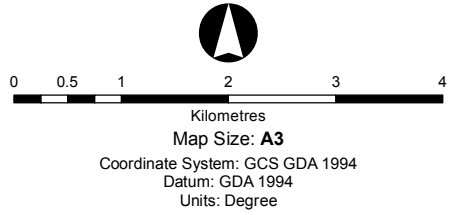
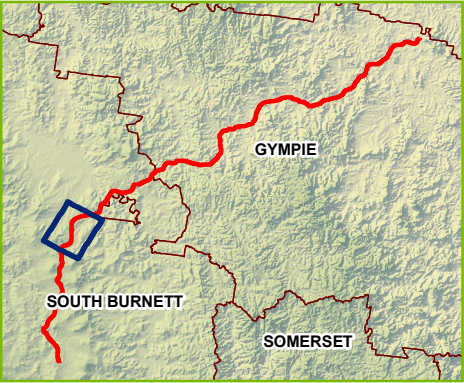
South Burnett Coal Project
Proposed Rail Corridor

Legend

DRAFT

- ⦿ Towns
- ✈ Airports
- Railway/light railway
- Alignment
- ▨ Affected lots
- ▨ ML Permit Application
- ▨ Roads
- Land tenure**
- ▨ Covenant
- ▨ Freehold
- ▨ Housing Land
- ▨ Lands Lease
- ▨ National Park
- ▨ Railway
- ▨ Reserve
- ▨ State Forest
- ▨ State Land

Page 4 of 14



Map produced by the Department of State Development
Spatial Services Unit, 14/06/2017



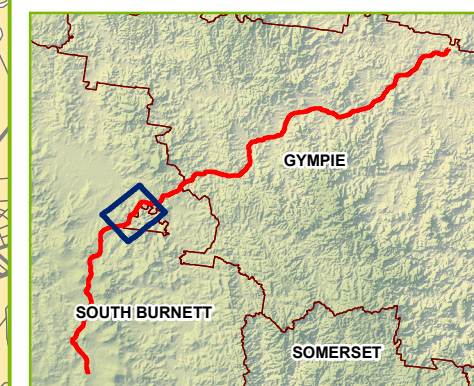
South Burnett Coal Project Proposed Rail Corridor

Legend

DRAFT

- Towns
- ✈ Airports
- Railway/light railway
- Alignment
- ▨ Affected lots
- ▨ ML Permit Application
- Roads
- Land tenure**
- ▨ Covenant
- ▨ Freehold
- ▨ Housing Land
- ▨ Lands Lease
- ▨ National Park
- ▨ Railway
- ▨ Reserve
- ▨ State Forest
- ▨ State Land

Page 5 of 14



0 0.5 1 2 3 4

Kilometres

Map Size: A3

Coordinate System: GCS GDA 1994

Datum: GDA 1994

Units: Degree

Map produced by the Department of State Development
Spatial Services Unit, 14/06/2017

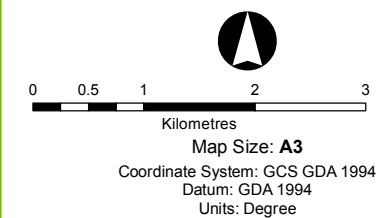
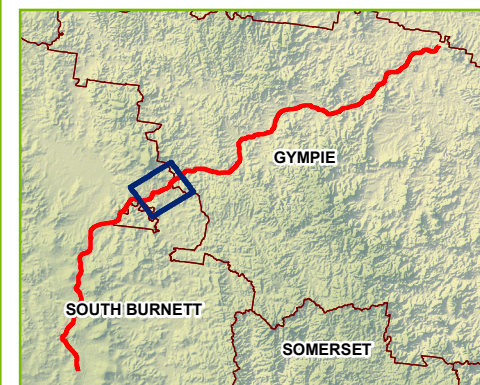
South Burnett Coal Project Proposed Rail Corridor

Legend

DRAFT

- Towns
- ✈ Airports
- Railway/light railway
- Alignment
- ▨ Affected lots
- ▨ ML Permit Application
- Roads
- Land tenure**
- ▨ Covenant
- ▨ Freehold
- ▨ Housing Land
- ▨ Lands Lease
- ▨ National Park
- ▨ Railway
- ▨ Reserve
- ▨ State Forest
- ▨ State Land

Page 6 of 14



Map produced by the Department of State Development
Spatial Services Unit, 14/06/2017

South Burnett Coal Project
Proposed Rail Corridor

Legend

DRAFT

Towns

Airports

Railway/light railway

Alignment

Affected lots

ML Permit Application

Roads

Land tenure

Covenant

Freehold

Housing Land

Lands Lease

National Park

Railway

Reserve

State Forest

State Land

Page 7 of 14

00.512

Kilometres

Map Size: A3

Coordinate System: GCS GDA 1994

Datum: GDA 1994

Units: Degree

Map produced by the Department of State Development
Spatial Services Unit, 14/06/2017

© Copyright the State of Queensland (Department of State Development) 2017. No liability accepted for any loss or damage which may arise from the use or reliance upon this information

RTIP1718-021-DSDMIP Page 116

Path: S:\Projects\CPD\20160830_SouthBurnettCoal\MXD\170612_SouthBurnettCoal_ProposedRail_Tenure_A3L.mxd

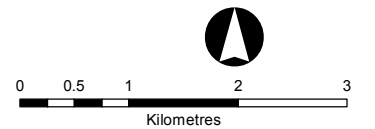
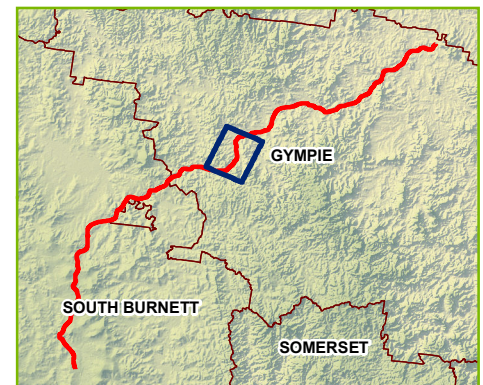
South Burnett Coal Project Proposed Rail Corridor

Legend

DRAFT

- ⊙ Towns
- ✈ Airports
- Railway/light railway
- Alignment
- ▨ Affected lots
- ML Permit Application
- Roads
- Land tenure**
- Covenant
- Freehold
- Housing Land
- Lands Lease
- National Park
- Railway
- Reserve
- State Forest
- State Land

Page 8 of 14



Map Size: A3
 Coordinate System: GCS GDA 1994
 Datum: GDA 1994
 Units: Degree

Map produced by the Department of State Development
 Spatial Services Unit, 14/06/2017

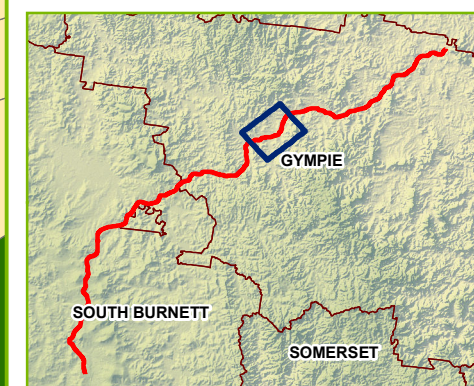
South Burnett Coal Project Proposed Rail Corridor

Legend

DRAFT

- ⊙ Towns
- ✈ Airports
- Railway/light railway
- Alignment
- ▨ Affected lots
- ▨ ML Permit Application
- Roads
- Land tenure**
 - ▨ Covenant
 - ▨ Freehold
 - ▨ Housing Land
 - ▨ Lands Lease
 - ▨ National Park
 - ▨ Railway
 - ▨ Reserve
 - ▨ State Forest
 - ▨ State Land

Page 9 of 14



0 0.5 1 2 3 4
Kilometres

Map Size: A3

Coordinate System: GCS GDA 1994
Datum: GDA 1994
Units: Degree

Map produced by the Department of State Development
Spatial Services Unit, 14/06/2017

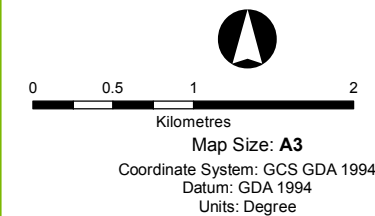
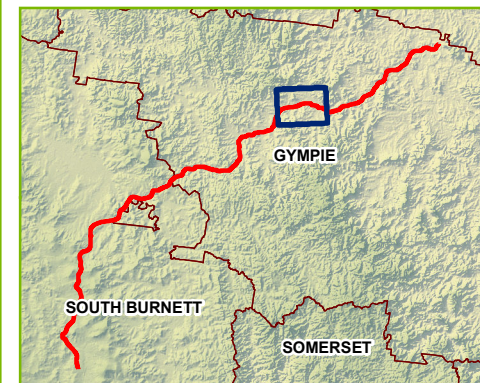
South Burnett Coal Project Proposed Rail Corridor

Legend

DRAFT

- ⊙ Towns
- ✈ Airports
- Railway/light railway
- Alignment
- ▨ Affected lots
- ▨ ML Permit Application
- ▨ Roads
- Land tenure**
 - ▨ Covenant
 - ▨ Freehold
 - ▨ Housing Land
 - ▨ Lands Lease
 - ▨ National Park
 - ▨ Railway
 - ▨ Reserve
 - ▨ State Forest
 - ▨ State Land

Page 10 of 14



Map produced by the Department of State Development
Spatial Services Unit, 14/06/2017

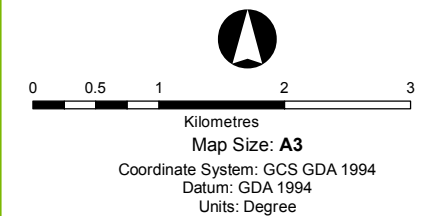
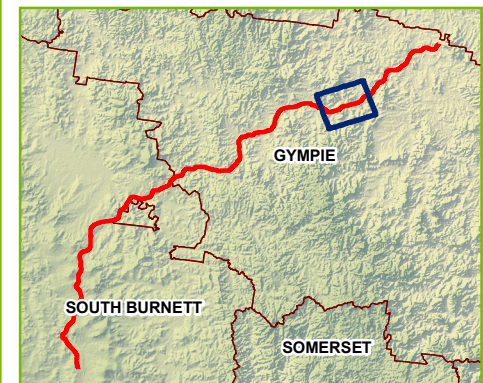
South Burnett Coal Project Proposed Rail Corridor

Legend

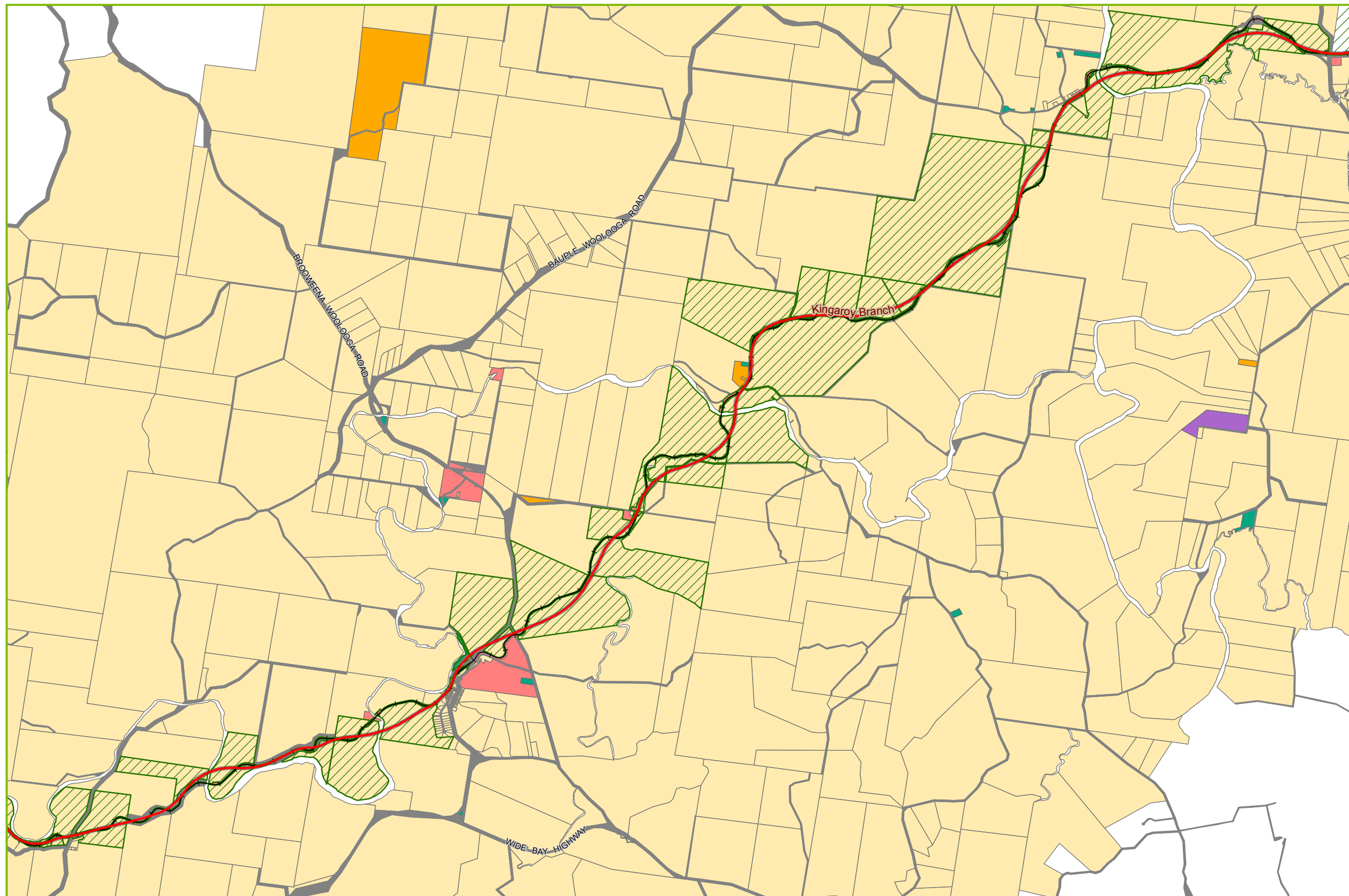
DRAFT

- ⊙ Towns
- ✈ Airports
- +— Railway/light railway
- Alignment
- ▨ Affected lots
- ▨ ML Permit Application
- Roads
- Land tenure**
- ▨ Covenant
- ▨ Freehold
- ▨ Housing Land
- ▨ Lands Lease
- ▨ National Park
- ▨ Railway
- ▨ Reserve
- ▨ State Forest
- ▨ State Land

Page 11 of 14



Map produced by the Department of State Development
Spatial Services Unit, 14/06/2017



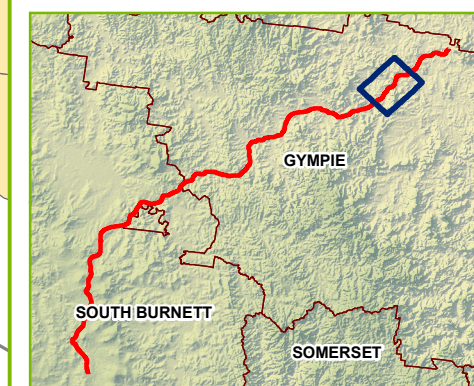
South Burnett Coal Project Proposed Rail Corridor

Legend

DRAFT

- ⊙ Towns
- ✈ Airports
- +— Railway/light railway
- Alignment
- ▨ Affected lots
- ▨ ML Permit Application
- Roads
- Land tenure**
 - ▨ Covenant
 - ▨ Freehold
 - ▨ Housing Land
 - ▨ Lands Lease
 - ▨ National Park
 - ▨ Railway
 - ▨ Reserve
 - ▨ State Forest
 - ▨ State Land

Page 12 of 14



0 0.5 1 2 3 4
Kilometres

Map Size: A3

Coordinate System: GCS GDA 1994
Datum: GDA 1994
Units: Degree

Map produced by the Department of State Development
Spatial Services Unit, 14/06/2017

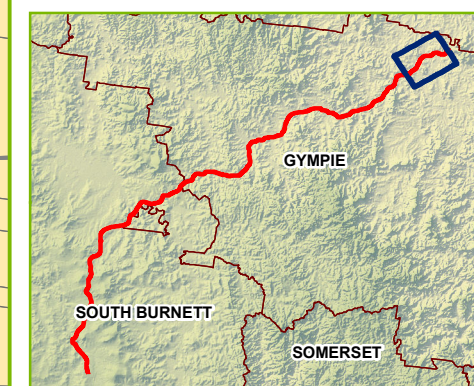
South Burnett Coal Project Proposed Rail Corridor

Legend

DRAFT

- ⊙ Towns
- ✈ Airports
- +— Railway/light railway
- Alignment
- ▨ Affected lots
- ▨ ML Permit Application
- Roads
- Land tenure**
- ▨ Covenant
- ▨ Freehold
- ▨ Housing Land
- ▨ Lands Lease
- ▨ National Park
- ▨ Railway
- ▨ Reserve
- ▨ State Forest
- ▨ State Land

Page 13 of 14



0 0.5 1 2 3
Kilometres

Map Size: A3
Coordinate System: GCS GDA 1994
Datum: GDA 1994
Units: Degree

Map produced by the Department of State Development
Spatial Services Unit, 14/06/2017

South Burnett Coal Project
Proposed Rail Corridor

Legend

DRAFT

Towns

Airports

Railway/light railway

Alignment

Affected lots

ML Permit Application

Roads

Land tenure

Covenant

Freehold

Housing Land

Lands Lease

National Park

Railway

Reserve

State Forest

State Land

Page 14 of 14

00.51234

Kilometres

Map Size: A3

Coordinate System: GCS GDA 1994

Datum: GDA 1994

Units: Degree

Map produced by the Department of State Development
Spatial Services Unit, 14/06/2017

© Copyright the State of Queensland (Department of State Development) 2017. No liability accepted for any loss or damage which may arise from the use or reliance upon this information

RTIP1718-021-DSDMIP Page 123

Path: S:\Projects\CPD\20160830_SouthBurnettCoal\MXD\170612_SouthBurnettCoal_ProposedRail_Tenure_A3L.mxd

LOT	PLAN	LOTPLAN	TENURE
2	RP102615	2RP102615	Freehold
41	SP122061	41SP122061	Lands Lease
3	SP125007	3SP125007	Lands Lease
133	FY612	133FY612	Freehold
261	SP104998	261SP104998	Lands Lease
343	FY354	343FY354	Freehold
65	FY400	65FY400	Reserve
107	FY178	107FY178	Freehold
5	FY2946	5FY2946	Freehold
117	FY1459	117FY1459	Freehold
2	RP150027	2RP150027	Freehold
5	RP187616	5RP187616	Freehold
17	RP7933	17RP7933	Freehold
1	RP12450	1RP12450	Freehold
1	SP124376	1SP124376	Freehold
132	MCH4037	132MCH4037	Freehold
3	RP111243	3RP111243	Freehold
8	LX172	8LX172	Freehold
2	RP174259	2RP174259	Freehold
1	RL8772	1RL8772	Lands Lease
4	RP894966	4RP894966	Freehold
3	RP109069	3RP109069	Freehold
1	RP37042	1RP37042	Freehold
2	RP25345	2RP25345	Freehold
4	RP200516	4RP200516	Freehold
2	RP27464	2RP27464	Lands Lease
2	W39372	2W39372	Lands Lease
111	SP122064	111SP122064	Lands Lease
21	CP827196	21CP827196	Lands Lease
140	FY602	140FY602	Freehold
371	FY542	371FY542	Freehold
3	RP76246	3RP76246	Freehold
221	SP116346	221SP116346	Lands Lease
2	RP25321	2RP25321	Lands Lease
122	SP122055	122SP122055	Lands Lease
121	SP122054	121SP122054	Lands Lease
333	SP122051	333SP122051	Lands Lease
141	SP279623	141SP279623	Lands Lease
143	SP279623	143SP279623	Lands Lease
133	FY612	133FY612	Freehold
137	FY1459	137FY1459	Freehold
2	MPH23168	2MPH23168	Freehold
87	LX478	87LX478	Freehold
299	LX2401	299LX2401	Freehold
76	LX392	76LX392	Freehold
121	RP22751	121RP22751	Freehold
3	RP193714	3RP193714	Freehold
2	RP160737	2RP160737	Freehold
6	RP800037	6RP800037	Freehold
131	RP911700	131RP911700	Freehold
8	SP151432	8SP151432	Freehold
130	SP267991	130SP267991	Freehold
32	RP7933	32RP7933	Freehold
96	RP886024	96RP886024	Freehold
1142	L37682	1142L37682	Freehold
1	RP805208	1RP805208	Freehold
95	RP886025	95RP886025	Freehold
25	RP868329	25RP868329	Freehold
1	MPH25143	1MPH25143	Freehold
1	RL2670	1RL2670	Lands Lease

8	RP25341	8RP25341	Freehold
3	RP25354	3RP25354	Freehold
2	RP197790	2RP197790	Freehold
4	RP23064	4RP23064	Lands Lease
11	CP827195	11CP827195	Lands Lease
101	SP122063	101SP122063	Lands Lease
131	SP122066	131SP122066	Lands Lease
9	RP147073	9RP147073	Lands Lease
41	CP827199	41CP827199	Lands Lease
51	CP827200	51CP827200	Lands Lease
54	SP193311	54SP193311	Reserve
4	RP76246	4RP76246	Freehold
31	SP121954	31SP121954	Lands Lease
121	SP122054	121SP122054	Lands Lease
301	SP122185	301SP122185	Lands Lease
271	SP122182	271SP122182	Lands Lease
342	FY354	342FY354	Freehold
4	RP113839	4RP113839	Freehold
304	FY2549	304FY2549	Freehold
257	FY2788	257FY2788	Reserve
4	FY2831	4FY2831	Freehold
2	RP134191	2RP134191	Freehold
60	RP888726	60RP888726	Freehold
5	RP23064	5RP23064	Freehold
6	RP70905	6RP70905	Freehold
2	RP94084	2RP94084	Freehold
1	SP233351	1SP233351	Freehold
9	SP189429	9SP189429	Freehold
2	RP36977	2RP36977	Freehold
6	SP189429	6SP189429	Freehold
1	RP169767	1RP169767	Freehold
2	RP167555	2RP167555	Freehold
16	RP7933	16RP7933	Freehold
2	RP190499	2RP190499	Freehold
134	MCH3671	134MCH3671	Freehold
120	RP22751	120RP22751	Freehold
1010	L37653	1010L37653	Freehold
3	RP185483	3RP185483	Freehold
1	RL2672	1RL2672	Lands Lease
480	W39902	480W39902	State Land
4	SP285765	4SP285765	Freehold
373	FY542	373FY542	Freehold
141	FY602	141FY602	Freehold
122	SP122055	122SP122055	Lands Lease
291	SP122184	291SP122184	Lands Lease
2	MPH23172	2MPH23172	Freehold
102	SP122053	102SP122053	Lands Lease
9	RP888726	9RP888726	Lands Lease
6	RP25329	6RP25329	Lands Lease
155	FY612	155FY612	Freehold
4	RP113839	4RP113839	Freehold
3	FY1771	3FY1771	Freehold
1	RP98885	1RP98885	Freehold
29	FY2946	29FY2946	Freehold
91	LX478	91LX478	Reserve
1	RP64250	1RP64250	Freehold
182	LX807559	182LX807559	Freehold
18	SP148209	18SP148209	Freehold
1	RL203448	1RL203448	Lands Lease
107	SP191723	107SP191723	Freehold
137	LX413	137LX413	Freehold

1	PER208883	1PER208883	Lands Lease
20	RP7933	20RP7933	Freehold
19	RP7933	19RP7933	Freehold
3	SP124376	3SP124376	Freehold
12	RP166416	12RP166416	Freehold
5	RP175686	5RP175686	Freehold
5	RP838602	5RP838602	Freehold
113	LX103	113LX103	Freehold
399	SP280472	399SP280472	Freehold
4	RP25324	4RP25324	Freehold
1	RP37040	1RP37040	Freehold
5	RP27464	5RP27464	Lands Lease
3	RP842826	3RP842826	Freehold
47	FY680	47FY680	Freehold
7	RP25341	7RP25341	Lands Lease
5	RP25334	5RP25334	Lands Lease
161	SP119277	161SP119277	Lands Lease
173	SP119278	173SP119278	Lands Lease
2	SP129242	2SP129242	Lands Lease
311	SP122185	311SP122185	Lands Lease
292	SP122184	292SP122184	Lands Lease
151	SP119277	151SP119277	Lands Lease
141	SP122067	141SP122067	Lands Lease
281	SP122183	281SP122183	Lands Lease
22	SP122541	22SP122541	Lands Lease
2	RP114513	2RP114513	Freehold
4	FY2946	4FY2946	Freehold
1	RP102615	1RP102615	Freehold
97	LX2686	97LX2686	State Land
62	FY2526	62FY2526	Freehold
6	RP897505	6RP897505	Freehold
26	SP210631	26SP210631	Freehold
2	RP54139	2RP54139	Freehold
2	RP901097	2RP901097	Freehold
2	RP169767	2RP169767	Freehold
31	RP7933	31RP7933	Freehold
90	FY709	90FY709	Freehold
1	PER6141	1PER6141	Lands Lease
9	SP151432	9SP151432	Freehold
16	L37282	16L37282	Freehold
29	SP139368	29SP139368	Freehold
17	SP136540	17SP136540	Freehold
1	PER4754	1PER4754	Lands Lease
100	LX1228	100LX1228	Freehold
3	RP25330	3RP25330	Freehold
7	RP903715	7RP903715	Freehold
1	RP25339	1RP25339	Freehold
23	CP827198	23CP827198	Lands Lease
2	RP25348	2RP25348	Lands Lease
2	RP25322	2RP25322	Lands Lease
42	SP122061	42SP122061	Lands Lease
242	SP116348	242SP116348	Lands Lease
191	SP119284	191SP119284	Lands Lease
251	SP173856	251SP173856	Lands Lease
282	SP122183	282SP122183	Lands Lease
2	RP12449	2RP12449	Lands Lease
83	SP122052	83SP122052	Lands Lease
82	SP122052	82SP122052	Lands Lease
53	FY271	53FY271	Freehold
1	FY1634	1FY1634	Freehold
500	FY184	500FY184	Freehold

41	FY2424	41FY2424	Freehold
455	FY2896	455FY2896	Freehold
329	FY2273	329FY2273	Reserve
165	LX2111	165LX2111	Freehold
470	LX2692	470LX2692	Reserve
1	RP165445	1RP165445	Freehold
2	RP149624	2RP149624	Freehold
6	RP70905	6RP70905	Freehold
1	RP94084	1RP94084	Freehold
5	SP200155	5SP200155	Freehold
2	RP70905	2RP70905	Freehold
3	SP124376	3SP124376	Freehold
3	RP12450	3RP12450	Freehold
1010	L37653	1010L37653	Freehold
13	RP22752	13RP22752	Freehold
28	SP137183	28SP137183	Freehold
1	RP25349	1RP25349	Freehold
1	MCH4250	1MCH4250	Freehold
2	RP85323	2RP85323	Freehold
2	RP165763	2RP165763	Freehold
2	W39371	2W39371	Lands Lease
2	RP27464	2RP27464	Lands Lease
22	SP122050	22SP122050	Lands Lease
71	SP122062	71SP122062	Lands Lease
101	SP122063	101SP122063	Lands Lease
251	SP173856	251SP173856	Lands Lease
17	RP819260	17RP819260	Freehold
273	SP122182	273SP122182	Lands Lease
4	FY839233	4FY839233	State Land
294	FY2322	294FY2322	Freehold
6	LX2579	6LX2579	Freehold
138	L371033	138L371033	Freehold
166	LX287	166LX287	Freehold
2	SP169402	2SP169402	Freehold
134	RP22751	134RP22751	Freehold
4	RP169767	4RP169767	Freehold
5	SP189429	5SP189429	Freehold
3	RP169767	3RP169767	Freehold
13	RP166416	13RP166416	Freehold
3	RP845306	3RP845306	Freehold
1	RP25328	1RP25328	Freehold
5	LX165	5LX165	Freehold
2562	L37313	2562L37313	Freehold
2	RP172904	2RP172904	Freehold
1	RL2671	1RL2671	Lands Lease
1	RL2672	1RL2672	Lands Lease
1	RP25351	1RP25351	Freehold
2	RP805208	2RP805208	Freehold
2	RP805208	2RP805208	Freehold
1	RP197790	1RP197790	Freehold
22	SP122050	22SP122050	Lands Lease
8	SP105950	8SP105950	Lands Lease
221	SP116346	221SP116346	Lands Lease
132	SP278440	132SP278440	Lands Lease
21	SP122060	21SP122060	Lands Lease
131	SP122066	131SP122066	Lands Lease
065	FY400	065FY400	Lands Lease
51	FY172	51FY172	Freehold
1	MPH23172	1MPH23172	Freehold
A	AP15019	AAP15019	Lands Lease
40	FY2424	40FY2424	Freehold

A	AP15009	AAP15009	Lands Lease
57	FY172	57FY172	Freehold
150	LX287	150LX287	Freehold
25	SP207243	25SP207243	Freehold
5	RP70905	5RP70905	Freehold
2	RP162180	2RP162180	Freehold
11	SP255995	11SP255995	Freehold
6	SP189429	6SP189429	Freehold
6	SP189429	6SP189429	Freehold
250	L371319	250L371319	Freehold
59	SP184725	59SP184725	Freehold
1	RP157007	1RP157007	Freehold
2	RP25332	2RP25332	Freehold
3	RP202370	3RP202370	Freehold